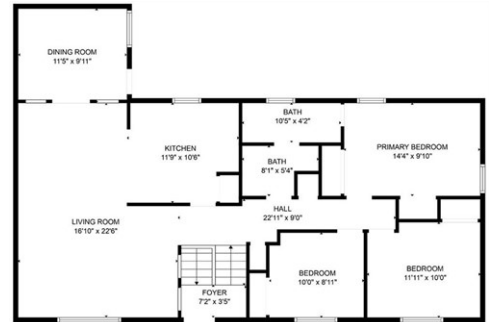




\$ 400,000



6715 Caenen Ave, Shawnee, KS 66216

- » Beds: 4 | Baths: 1 Full, 2 Half
- » MLS #: 11431181
- » Single Family | 1,976 ft² | Lot: 10,890 ft²
- » More Info: 6715CaenenAveShawnee.IsForSale.com



Rob Lang
 At Home Kansas
 (785) 393-2274 (Cell)
rob@askroblang.com
<http://www.YouWantHouses.com>



At Home Kansas
 24914 W 76th St
 Shawnee, KS 66227
 (785) 393-2274

1976 sqft, built in 1968, Lot size is 10799 sqft or 0.248 acre. 2660 sqft gross. 1356 sqft on first floor. 1304 sqft gross sqft downstairs with 620 finished bsmt space and 684 unfinished bsmt space (garage). All new professionally crafted flooring and new interior paint. Fenced yard, walkout basement through the garage, across the street from Rhein Benninghoven Elementary School. Just south of Shawnee Mission Parkway between Pflumm and Quivira. Very close to Shawnee Villa Plaza to the northeast and HyVee to the northwest. Home has been pre-inspected with almost all deficiencies repaired/remedied. Watch this walkthrough video.

